

## Who are we?

Ashley Toddlers is run by a group of people from the church. Please introduce yourself to us!

We are:

Gill Jalland (01727 840596)  
Elaine Hoffman  
Celia Hughes  
Hilary Pickering  
Claire Wilkinson



## What do we do?

Ashley Toddlers is open to all parents and carers, and their pre-school children. We provide:

10 - 11.10 am

Toys, craft activities, drinks

11.10 - 11.30 am

singing time

We provide drinks for adults and children but have a policy of no eating at Toddlers. We do not make a charge but a contribution of £1 a family would be appreciated.

Please remember that parents or carers are responsible for the safety and care of the children they bring along.

Please familiarise yourself with the fire exits in the main hall and the coffee lounge.

## Library

You are welcome to borrow adults' and children's books from our church library. Please enter the details in the folder provided.

## Prayer

The church has a prayer meeting every Saturday morning.

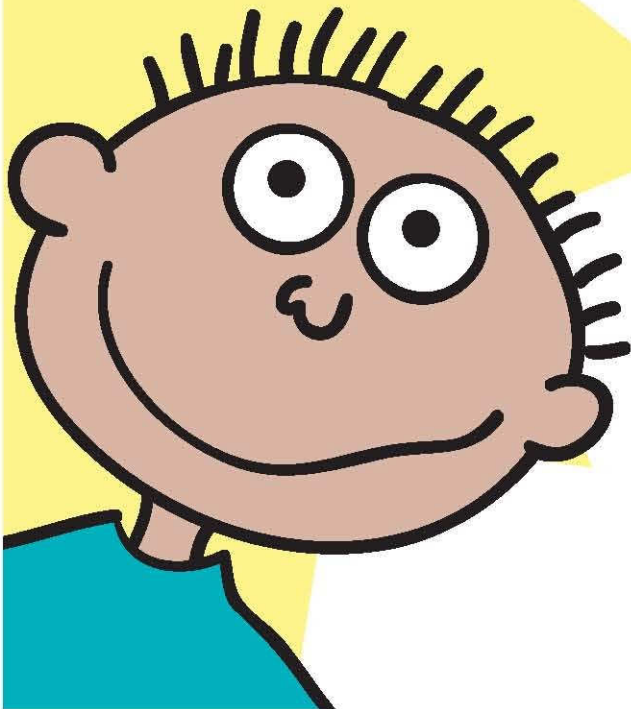
If you would like us to pray for you, speak to one of the Ashley Toddlers helpers or place your prayer request (named or anonymous) in the prayer box by the Toddlers' noticeboard, and we will pray for you after Toddlers.

A community bringing God's love to our world

Toddlers

# Welcome to

# Toddlers



## Sundays at Ashley

10 - 11.15am

Worship, sharing and teaching.  
Creche, children  
and young people's groups

11.15 - 12 noon

Coffee

You are welcome to any part of the  
morning.

We aim to be a 'child friendly'  
church.

Parents and toddlers are always  
welcome.

## Mid Week

We meet in small groups in local  
homes for friendship,  
prayer, Bible study, discussion and  
worship.

For more information about the  
church contact:

Roy Gregory

01727 759522

or

[rdgregory@hotmail.com](mailto:rdgregory@hotmail.com)

Artwork by Matthew Slater

# Ashley Church



# Toddlers



Thursdays  
10 - 11.30 am