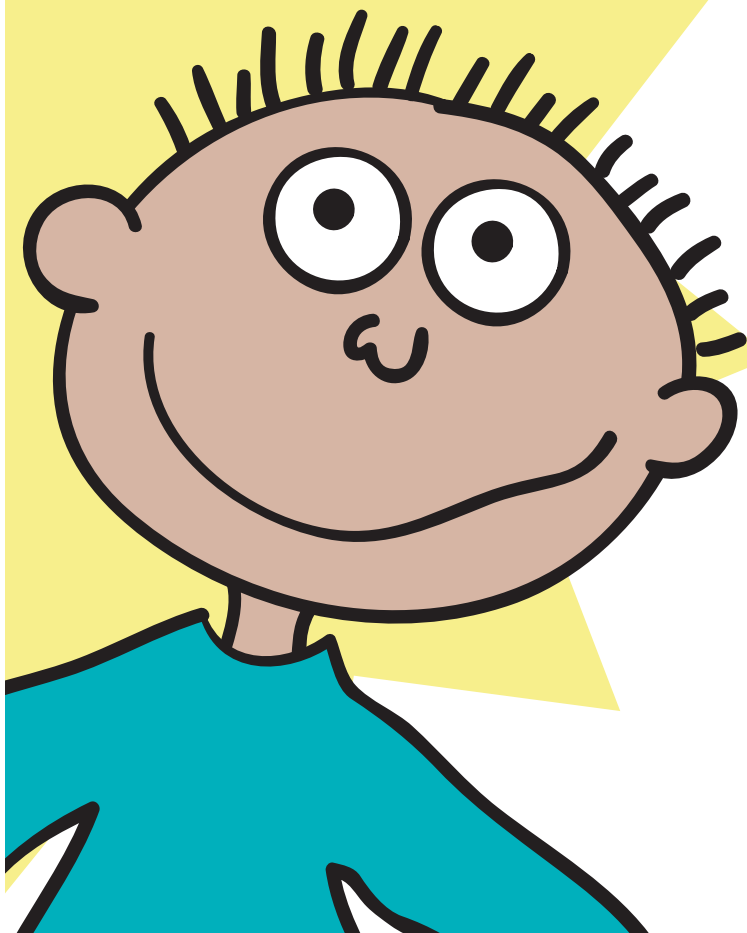


Toddlers



Sundays at Ashley

10 - 11.15am

Worship, sharing and teaching.

Creche, children
and young people's groups

11.15 - 12 noon

Coffee

You are welcome to any part of
the morning.

We aim to be a 'child friendly'
church.

Parents and toddlers are always
welcome.

Mid Week

We meet in small groups in local
homes for friendship,

prayer, Bible study, discussion
and worship.

We also run 'Alpha' courses for
those interested in finding out
more about the Christian faith.

For more information about the
church contact:

Roy Gregory

01727 759522

or

rdgregory@hotmail.com

Artwork by Matthew Slater

Ashley Hall Church



Toddlers



Thursdays

10 - 11.30 am



Who are we?

Ashley Toddlers is run by a group of people from the church. Please introduce yourself to us!

We are:

Gill Jalland (01727 840596)
Audrey Barber
Hilary Pickering
Claire Wilkinson
Mike Horan

What do we do?

Ashley Toddlers is open to all parents and carers, and their pre-school children. We provide:

10 - 11.10 am

Toys, craft activities, coffee and squash

11.10 - 11.30 am

singing time

We do not make a charge but a contribution of 50p a family would be appreciated.

Please familiarise yourself with the fire exits in the main hall and the coffee lounge.

Library

You are welcome to borrow adults' and children's books from our church library. Please enter the details in the folder provided.

Prayer

The church has a prayer meeting every Saturday morning.

If you would like us to pray for you, speak to one of the Ashley Toddlers helpers or place your prayer request (named or anonymous) in the prayer box in the coffee lounge.

You are also welcome to join us for a prayer time after Toddlers on the 1st Thursday of each month.